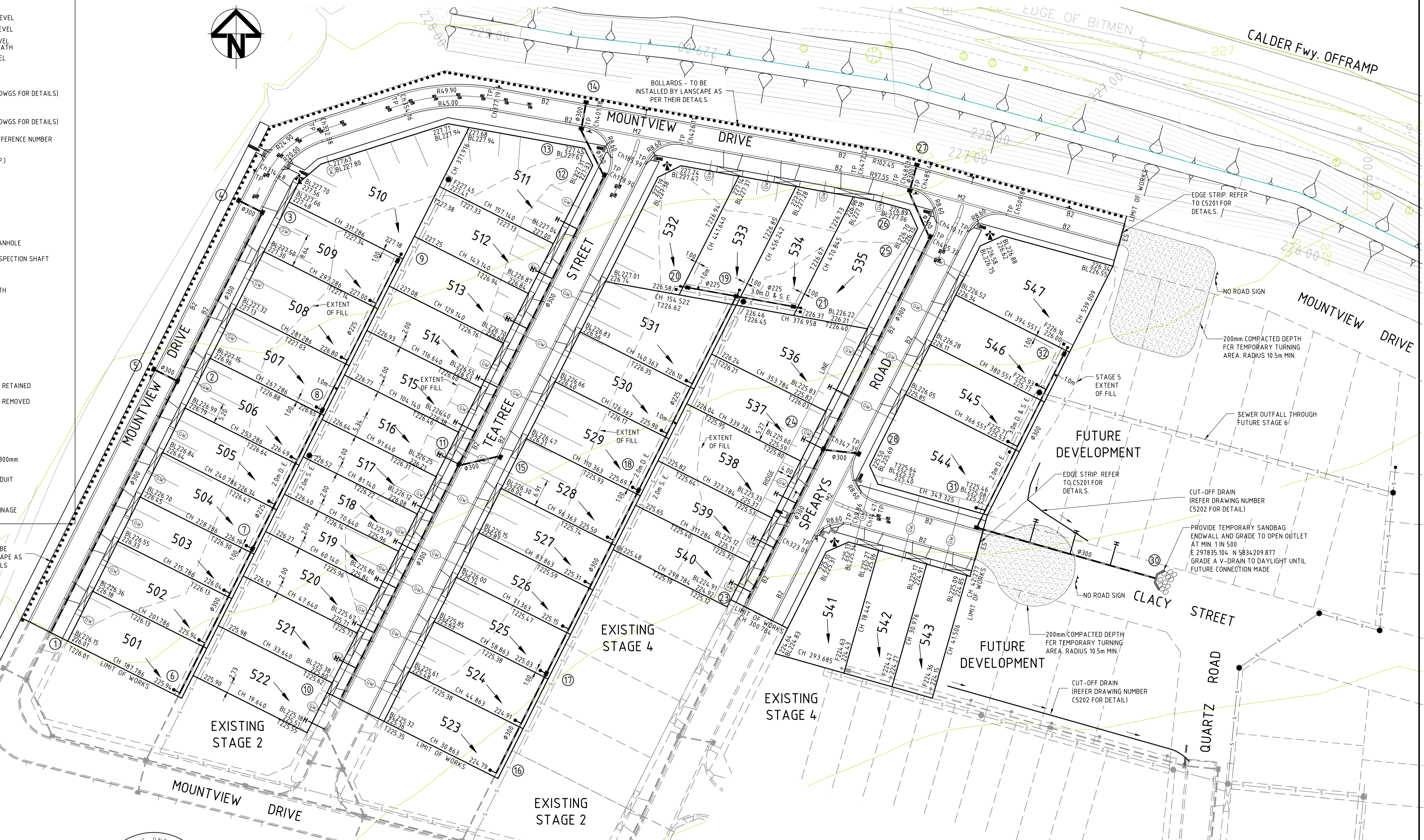
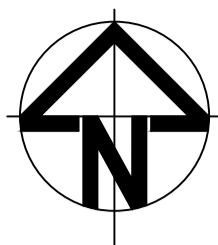


**PROPOSED WORKS LEGEND**

- 55.25 EXISTING SURFACE LEVEL
- F67.00 FINISHED SURFACE LEVEL
- BL67.00 FINISHED SURFACE LEVEL ADJACENT TO FOOTPATH
- T67.00 TOP OF BATTER LEVEL
- 65.5- PROPOSED CONTOUR
- B2 BARRIER KERB (REFER TO GAA STD DWGS FOR DETAILS)
- M2 DISH DRAIN (REFER TO GAA STD DWGS FOR DETAILS)
- 1 STORMWATER PIT REFERENCE NUMBER
- SIDE ENTRY PIT (S.E.P.)
- JUNCTION PIT (J.P.)
- GRATED PIT (G.P.)
- H HOUSE DRAIN
- PROPERTY INLET
- PROPOSED SEWER MANHOLE
- PROPOSED SEWER INSPECTION SHAFT
- DIRECTION OF FALL
- OVERLAND FLOW PATH
- BOLLARD
- STREET SIGN
- NO ROAD SIGN
- CONCRETE END WALL (REFER TO GAA STD DWGS FOR DETAILS)
- TGS'S
- EXISTING TREE TO BE RETAINED
- EXISTING TREE TO BE REMOVED
- TBMS
- PSMS
- FILL GREATER THAN 300mm
- GAS & WATER CONDUIT
- SEWER
- STORMWATER DRAINAGE



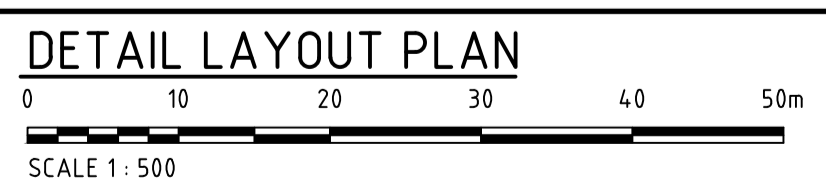
**WARNING**  
**BWARE OF UNDERGROUND SERVICES**  
 THE LOCATIONS OF UNDERGROUND SERVICES ARE APPROXIMATE ONLY AND THEIR EXACT POSITION SHOULD BE PROVEN ON SITE. NO GUARANTEE IS GIVEN THAT ALL EXISTING SERVICES ARE SHOWN.



NOTE:  
 1. REFER TO DWG. C5001 FOR GENERAL NOTE DETAILS.

STREET	RESERVE WIDTH	GAS		WATER		ELECTRICITY		NBN		BK of KERB
		SIDE	OFFSET	REUSE WATER	POTABLE WATER	U/G CABLE	SIDE	OFFSET	OFFSET	
MOUNTVIEW DRIVE (ADJACENT VINEYARD ROAD)	13.00m	E	1.70	E	2.20	E	2.70	E	3.20	5.20
MOUNTVIEW DRIVE (ADJACENT CALDER FWY)	13.00m	S	1.70	S	2.20	S	2.70	S	3.20	5.20
TEATREE STREET	16.00m	W	1.70	W	2.20	W	2.70	E	1.80	4.20
SPEARYS ROAD	16.00m	W	1.70	W	2.20	W	2.70	E	1.80	4.20
CLACY STREET	16.00m	N	1.70	N	2.20	N	2.70	S	1.80	4.20

N - NORTH, S - SOUTH, E - EAST, W - WEST  
 1. NBN AND ELECTRICITY CABLES TO BE CONSTRUCTED IN A COMMON TRENCH IN ACCORDANCE WITH SEC STANDARD DRG.  
 2. GAS AND WATERMANS TO BE CONSTRUCTED IN A COMMON TRENCH.  
 3. \* INDICATES OFFSET FROM BACK OF KERB OR EDGE OF CONCRETE.



Issue	Description	Date
C3	ADDED LEGEND	24.09.14
C2	CONSTRUCTION ISSUE 2 - COUNCIL REVISIONS	05.05.14
C1	CONSTRUCTION ISSUE	22.04.14
P2	PRILIMINARY ISSUE	18.02.14
P1	PRILIMINARY ISSUE	13.01.14

Client

Status	<b>CONSTRUCTION</b>
Scales	1 : 500
Original Size	A1
Height Datum	AHD
Grid	MGA
Filename	C5200-AA005214-VCD-00ROAD&DRAINAGESHEET1.DWG

Project CITY OF MELTON  
**BLOOMDALE ESTATE STAGE 5**

Title  
**DETAIL PLAN**

HYDER CONSULTING PTY LTD  
 Level 16, 31 Queen Street  
 Melbourne, Vic 3000  
 Australia  
 ACN 104 485 289  
 Tel: +61 (0)3 8623 4000  
 Fax: +61 (0)3 8623 4111  
 www.hyderconsulting.com  
 © Copyright reserved

Drawing No. **C5200** - Project No. **AA005214** - Issue **C3**