
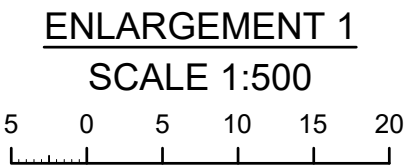
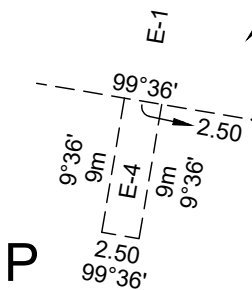
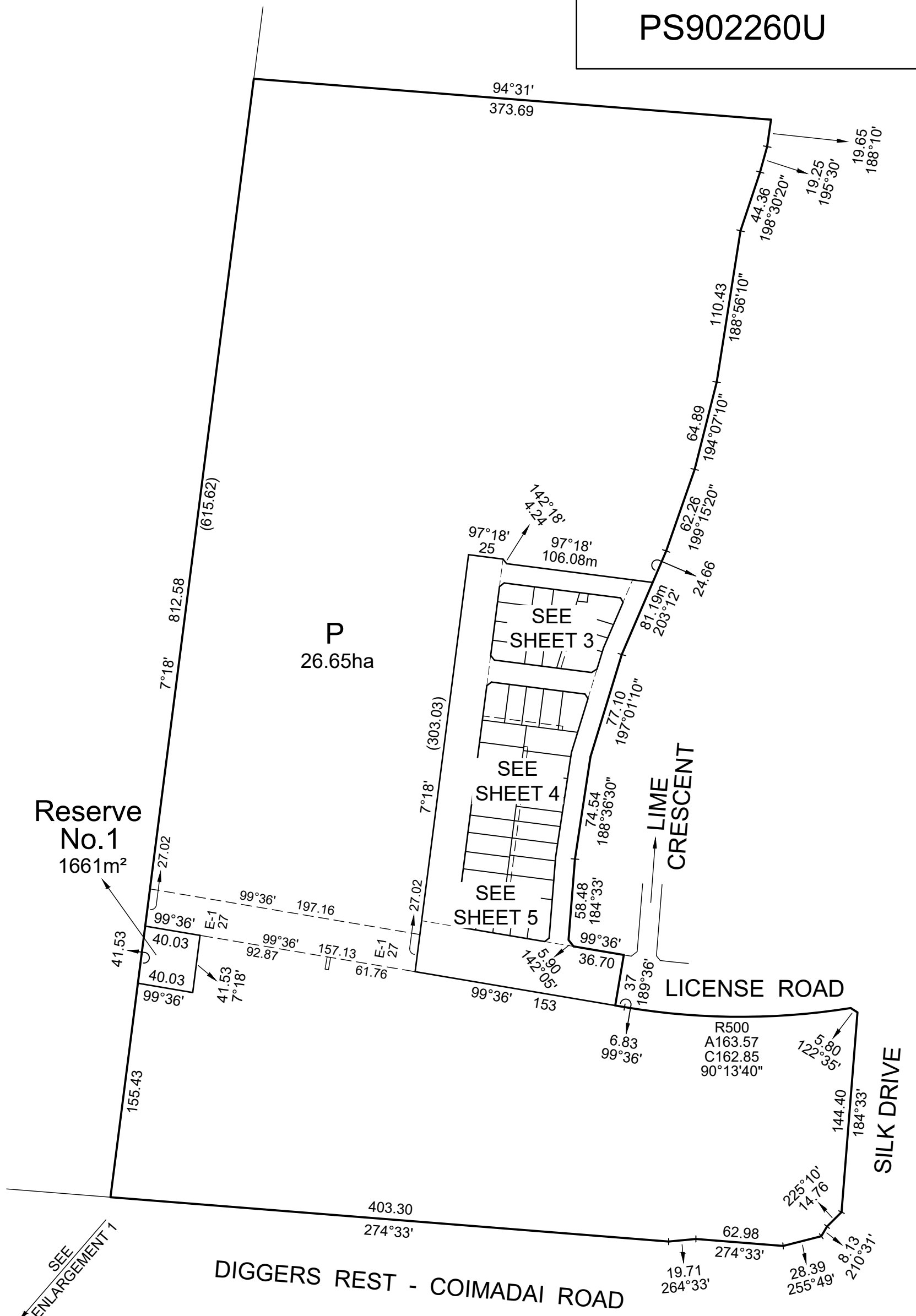
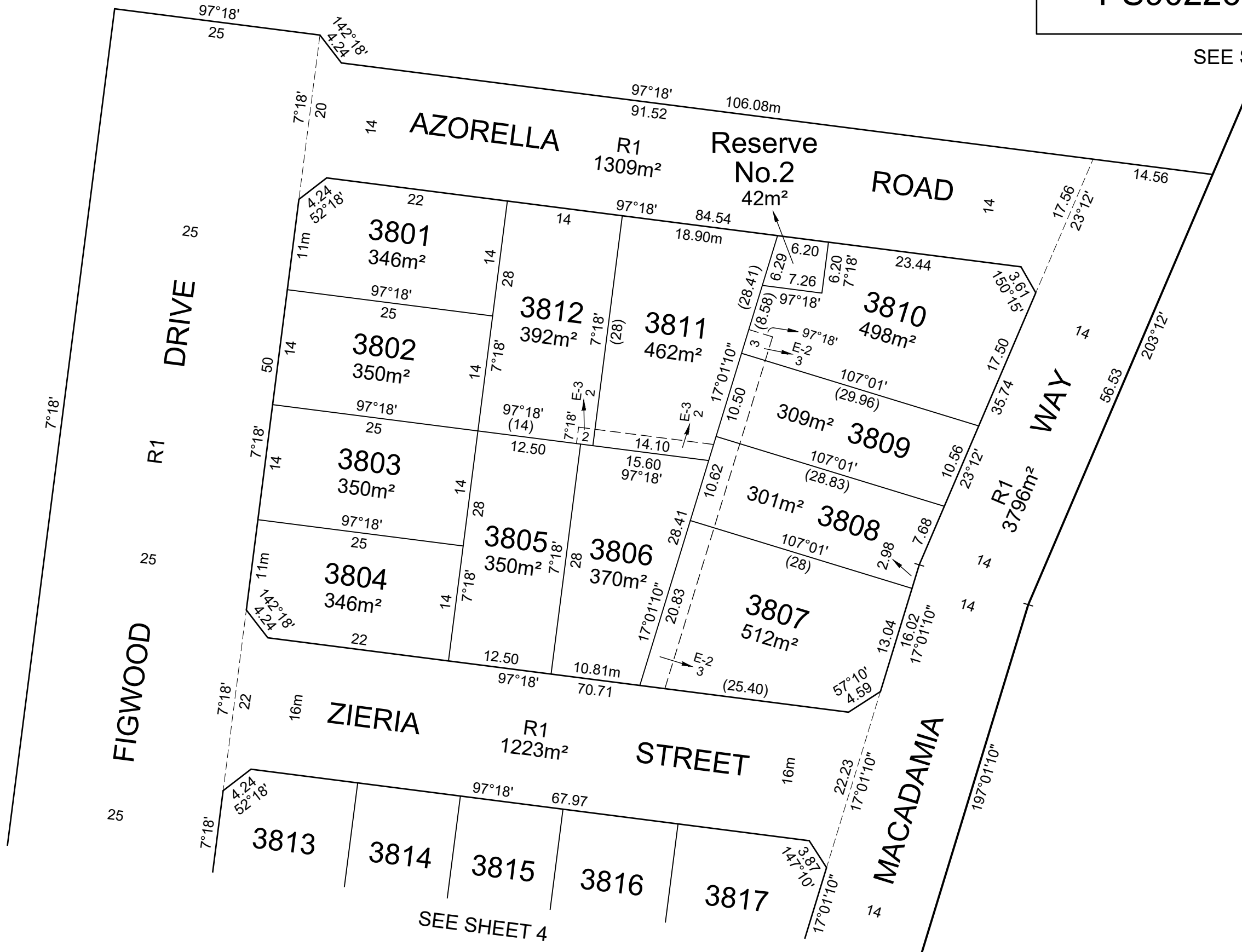


PLAN OF SUBDIVISION			EDITION 1	PS902260U
LOCATION OF LAND PARISH: HOLDEN TOWNSHIP: ---- SECTION: 13 CROWN ALLOTMENT: B (PART) CROWN PORTION: ---- TITLE REFERENCE: Vol. Fol. LAST PLAN REFERENCE: Lot N on PS839291H POSTAL ADDRESS: DIGGERS REST - COIMADAI ROAD (at time of subdivision) DIGGERS REST 3427 MGA 94 CO-ORDINATES: E: 296 440 ZONE: 55 (of approx centre of land in plan) N: 5 833 310			COUNCIL NAME: MELTON CITY COUNCIL	
VESTING OF ROADS AND/OR RESERVES			NOTATIONS	
IDENTIFIER	COUNCIL/BODY/PERSON		Lots 3801 - 3840 may be affected by one or more restrictions. Refer to Creation of Restriction A on Sheet 6 of this plan for details	
Road R1 Reserve No. 1 Reserve No. 2	Melton City Council City West Water Corporation Jemena Electricity Networks (VIC) Ltd			
NOTATIONS				
DEPTH LIMITATION: Does Not Apply				
SURVEY: This plan is based on survey in BP3350U				
STAGING: This is not a staged subdivision.				
BLOOMDALE - Release 38 Area of Release: 3.672ha No. of Lots: 40 Lots and Balance Lot P				
EASEMENT INFORMATION				
LEGEND: A - Appurtenant Easement E - Encumbering Easement R - Encumbering Easement (Road)				
Easement Reference	Purpose	Width (Metres)	Origin	Land Benefited/In Favour Of
E-1	Sewerage	See Diagram	This Plan	City West Water Corporation
	Power Line		This Plan (Section 88 Electricity Industry Act 2000)	Jemena Electricity Networks (Vic) Ltd
E-2	Drainage	3	This Plan	Melton City Council
	Sewerage			City West Water Corporation
E-3	Drainage	2	This Plan	Melton City Council
E-4	Sewerage	See Diagram	This Plan	City West Water Corporation
				
SURVEYORS FILE REF: Ref. 01112-S38 Ver. 3			ORIGINAL SHEET SIZE: A3	SHEET 1 OF 6
Licensed Surveyor: RAYMOND LI / Version No 3				





P
SEE SHEET 2



SEE SHEET 3

ZIERIA R1 STREET

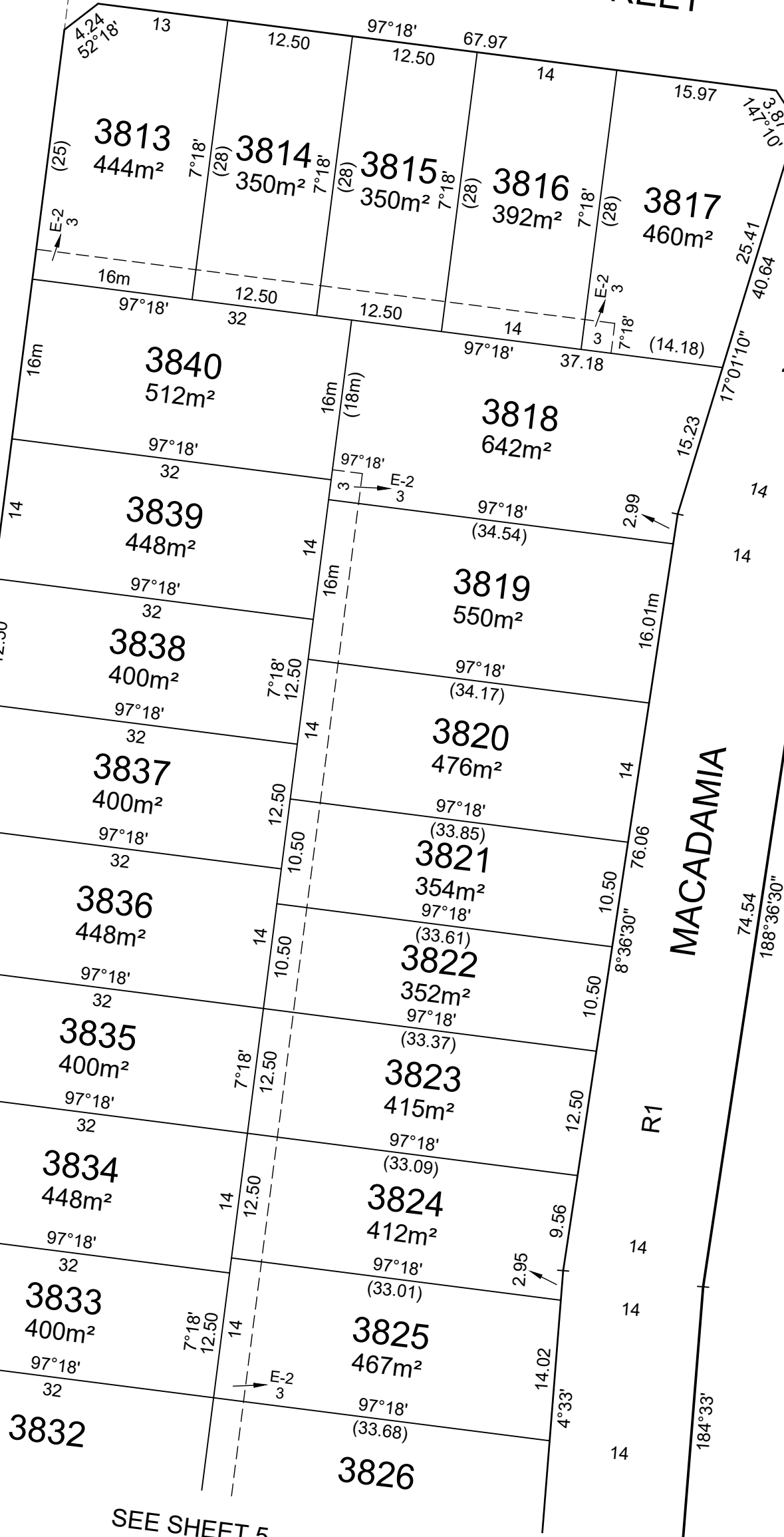
WAY

MACADAMIA

DRIVE

FIGWOOD

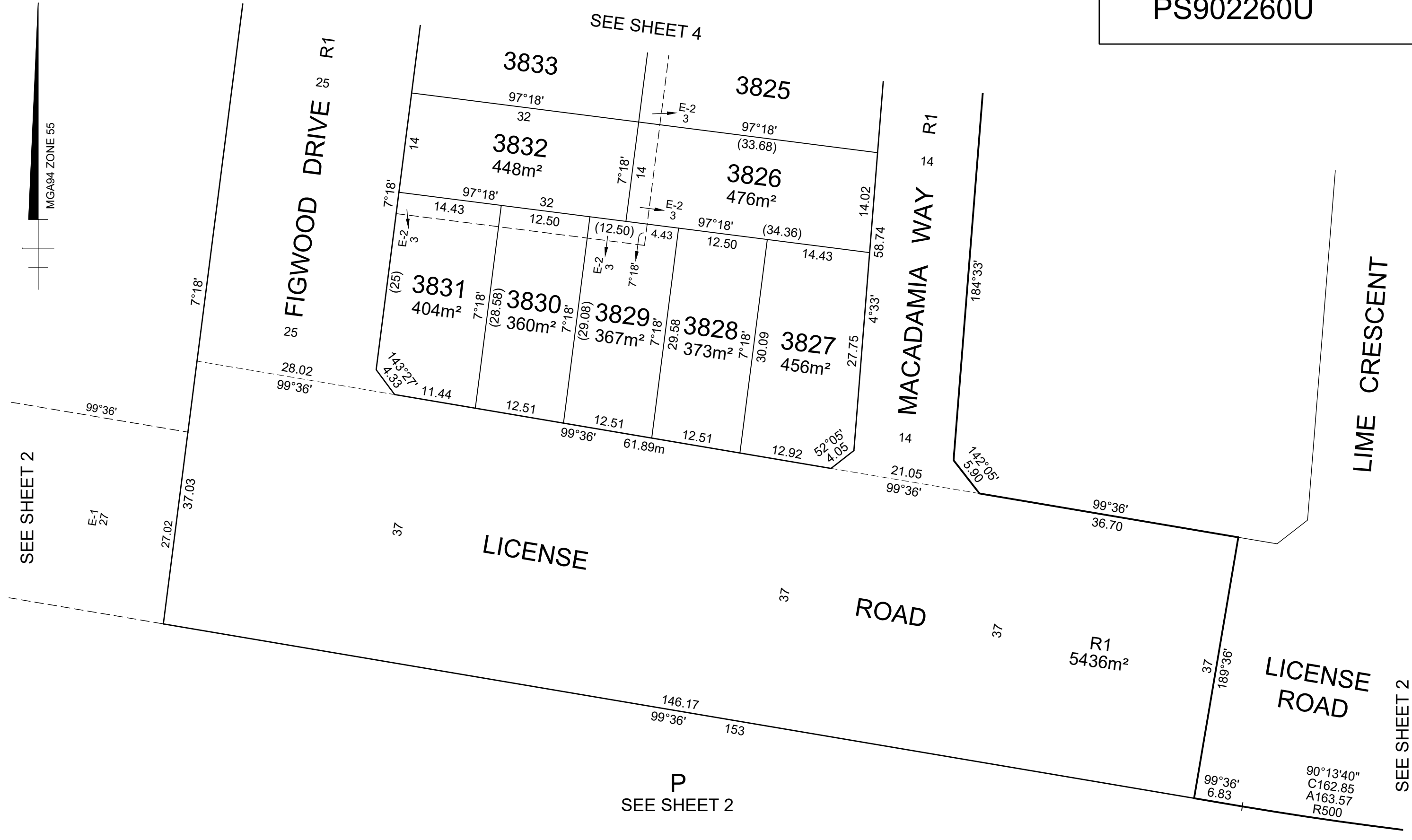
R1
6666m²



SEE SHEET 5

P
SEE SHEET 2

MGA94 ZONE 55



CREATION OF RESTRICTION A

The registered proprietors of the burdened land covenant with the registered proprietors of the benefited land as set out in the restriction with the intent that the burden of the restriction runs with and binds the burdened land and the benefit of the restriction is annexed to and runs with the benefited land.

BURDENED LAND: See Table 1
 BENEFITED LAND: See Table 1

RESTRICTION:
 The burdened land cannot be used except in accordance with the provisions recorded in MCP

Expiry date: 31/12/2026

TABLE 1

BURDENED LOT No.	BENEFITING LOTS ON THIS PLAN
3801	3802, 3812
3802	3801, 3803, 3812
3803	3802, 3804, 3805
3804	3803, 3805
3805	3803, 3804, 3806, 3812
3806	3805, 3807, 3808, 3811, 3812
3807	3806, 3808
3808	3806, 3807, 3809, 3811
3809	3808, 3810, 3811
3810	3809, 3811
3811	3806, 3808, 3809, 3810, 3812
3812	3801, 3802, 3805, 3806, 3811
3813	3814, 3840
3814	3813, 3815, 3840
3815	3814, 3816, 3818, 3840
3816	3815, 3817, 3818
3817	3816, 3818
3818	3815, 3816, 3817, 3819, 3839, 3840
3819	3819, 3821, 3838, 3839
3820	3819, 3821, 3837, 3838

TABLE 1 Continued

BURDENED LOT No.	BENEFITING LOTS ON THIS PLAN
3821	3820, 3822, 3836, 3837
3822	3821, 3823, 3836
3823	3822, 3824, 3835
3824	3823, 3825, 3834
3825	3824, 3826, 3833, 3834
3826	3825, 3827, 3828, 3829, 3832
3827	3826, 3828
3828	3826, 3827, 3829
3829	3826, 3828, 3830, 3832
3830	3829, 3831, 3832
3831	3830, 3832
3832	3826, 3829, 3830, 3831, 3833
3833	3825, 3832, 3834
3834	3824, 3825, 3833, 3835
3835	3823, 3834, 3836
3836	3821, 3822, 3835, 3837
3837	3820, 3821, 3836, 3838
3838	3819, 3820, 3837, 3839
3839	3818, 3819, 3838, 3840
3840	3813, 3814, 3815, 3818, 3839